

Registered Unemployment July 2011

Statistics Unit: www.gov.je/statistics



Summary

On 31 July 2011:

- on a **seasonally adjusted** basis¹, the total number of people registered as unemployed and actively seeking work (ASW) in Jersey was²:
 - 20 higher than a month earlier, in June 2011;
 - 30 lower than the average for the preceding three months;
- the non-seasonally adjusted ASW total was 1,350; this latest monthly total is:
 - 70 higher than that of a month earlier, in June 2011;
 - 110 higher than that of a year earlier, in July 2010;
- **long-term unemployment** (registered for more than 52 weeks) has doubled during the last twelve months and now accounts for almost one in five of the ASW total;
- 300 **teenagers aged 16-19 years** were registered as ASW, some 20 more than in the previous month; 130 teenagers were on the Advance to Work scheme.

Introduction

Data on people registered as unemployed and actively seeking work in Jersey is compiled and administered by the Social Security Department. The Statistics Unit independently analyses this anonymised data and publishes a monthly report.

When interpreting the numbers presented in this report, it should be kept in mind that there is no legal requirement for all unemployed residents of Jersey to register as actively seeking work (ASW) with the Social Security Department. The numbers shown, therefore, constitute an informative set of indicators of the level and characteristics of unemployment in the Island at the specified point in time.

Furthermore, when placing the figures contained in this report in a historical context, it should be recognised that there have been significant changes in the criteria relating to registered unemployment in Jersey in recent years. In particular, the introduction of Income Support in 2008 has led to a much higher proportion of individuals actively seeking work being included in the registered unemployment figures.

The internationally comparable unemployment rate (as defined by the International Labour Organisation, ILO) is measured on an annual basis by the Jersey Annual Social Survey. In the summer of 2010 the ILO unemployment rate for Jersey was measured to be 3.0%. This rate corresponds to 1,700 people being unemployed at that point in time.

The numbers of people registered as unemployed and actively seeking work include people who are on the Advance to Work, Advance Plus and Workwise schemes (see Note 1).

¹ Seasonal adjustment is a statistical technique which enables examination of the underlying behaviour in a series of data by removing variations associated with the time of year, e.g. Christmas, Easter, academic year.

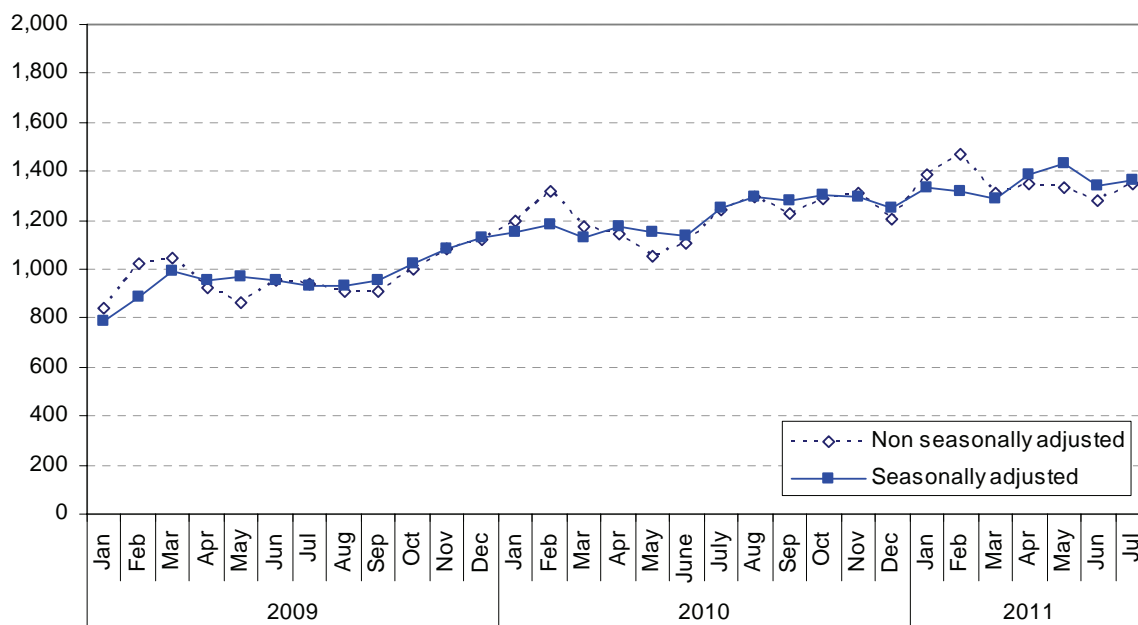
² ASW numbers presented in this report are rounded independently to the nearest 10.

Registered Unemployed people Actively Seeking Work

On 31 July 2011, 1,350 people were registered with the Social Security Department as unemployed and actively seeking work (ASW). Almost three-quarters (74%) of people registered as ASW on this date (1,000 individuals) were receiving Income Support³.

Figure 1 shows the total number of people registered as ASW at the end of each month since January 2009 (monthly data are also shown in Appendix Table A1). The total number registered in July 2011 was 70 higher than a month earlier, in June 2011, and 110 higher than a year earlier, in July 2010.

Figure 1– Total number of individuals registered as ASW, Jan 2009 – Jul 2011



The seasonally adjusted series of the total registered as ASW, in which seasonal and calendar effects are removed, is also shown on Figure 1. From this perspective, the total number of people registered as ASW in Jersey in July 2011 was:

- 20 higher than in the previous month, June 2011;
- 30 lower than the average for the preceding three-month period, April - June 2011.

Registered ASW by age

On 31 July 2011, almost two-fifths (39%) of all people registered as ASW were under the age of 25, with more than a fifth (22%) of the total being teenagers aged 16-19 years.

Figure 2 shows the numbers registered as ASW by age of individuals for the last five months, from March 2011 to July 2011. Most age categories saw increased numbers of people registered as ASW in July 2011 compared with the previous month, June 2011; the greatest increases were recorded for those aged 16-19 and 20-24 years, up by 30 and 20, respectively, in the latest month.

³ The total number of adults receiving Income Support and not working will be greater than this figure, which represents the number of people receiving Income Support who were registered as ASW on 31 July 2011.

Figure 2 – Individuals registered as ASW by age, Mar 2011 – July 2011

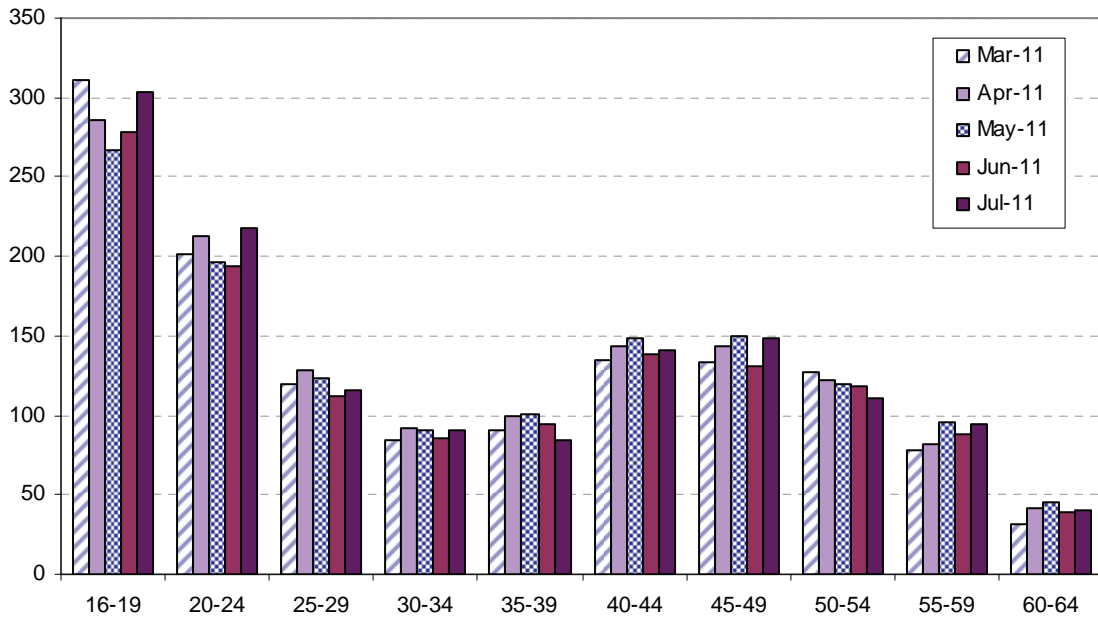
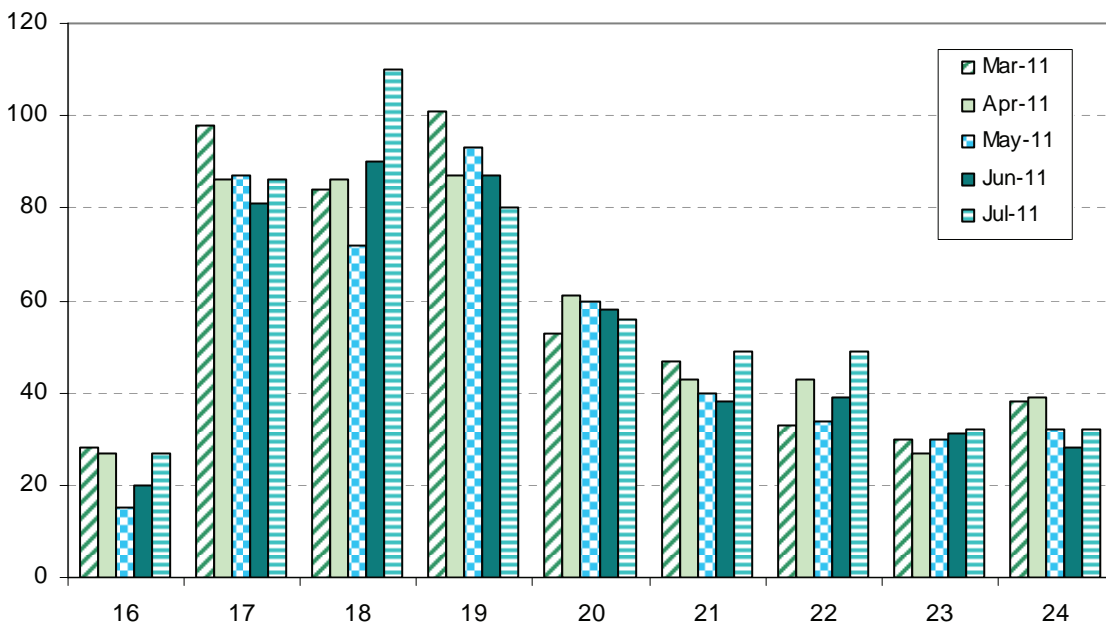


Figure 3 shows the age distribution for people under 25 years of age who were registered as ASW in the latest five months, from March 2011 to July 2011. As in previous recent months, the greatest numbers of people registered as ASW at the end of July 2011 were for ages 17-19 years.

Of the 300 teenagers who were registered as ASW at the end of July 2011, 130 were on the Advance to Work scheme.

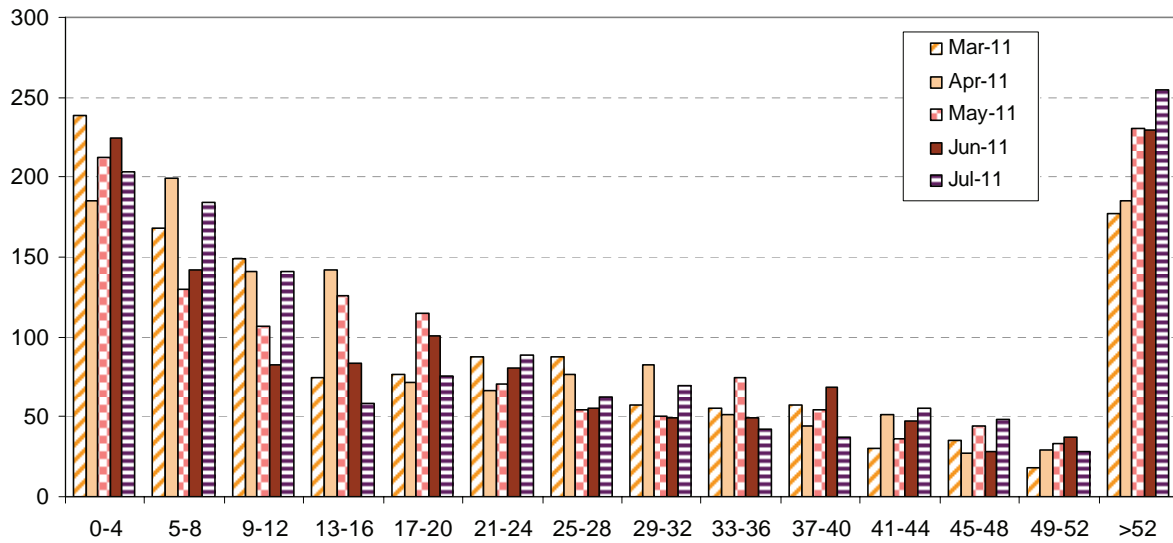
Figure 3 – Individuals under the age of 25 registered as ASW, Mar 2011 – July 2011



Duration as ASW

Around two-fifths (39%) of all people registered as ASW on 31 July 2011 had been registered for fewer than 13 weeks (approximately 3 months)⁴ – see Figure 4.

Figure 4 – Registered ASW by length of period registered (weeks), Mar 2011 - July 2011



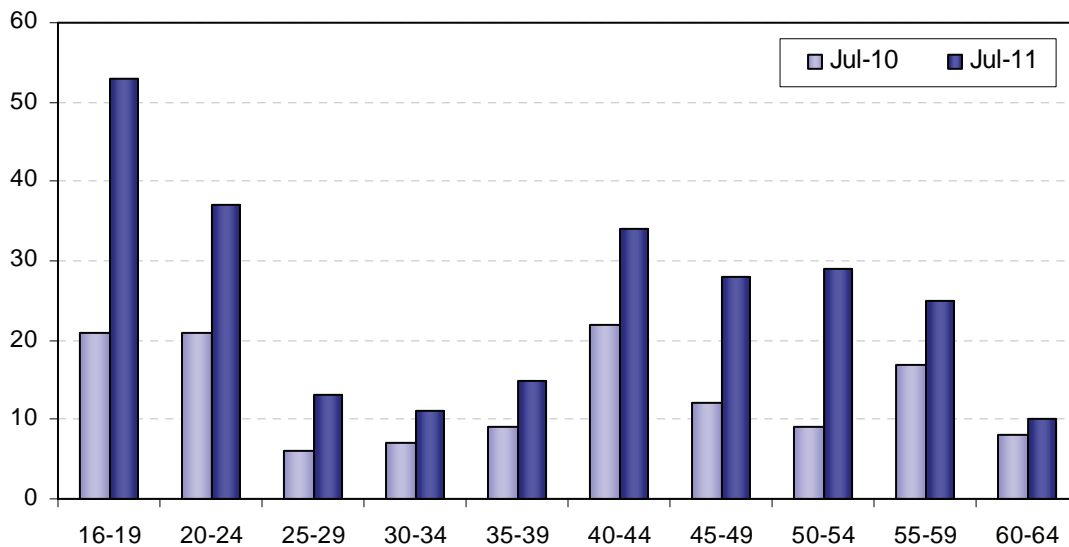
Some 200 people had registered as ASW in the latest four week period, 20 fewer than for the corresponding four week period up to 30 June 2011.

Long-term unemployment

On 31 July 2011, almost one in five (19%) of the ASW total, corresponding to 260 individuals, had been registered as ASW for over a year. The number of people in long-term unemployment in Jersey (registered as unemployed and ASW for more than 52 weeks) has doubled over the last twelve months, from 130 in July 2010 to 260 in July 2011.

Figure 5 shows the age distribution of the long-term unemployed in July 2011 and twelve months earlier, in July 2010.

Figure 5 – Long-term unemployed by age, July 2010 and July 2011



⁴ In May 2011 a change in the algorithm used to calculate the duration of unemployment was introduced: the duration of unemployment henceforth includes all periods of unemployment with less than a 4 week gap.

People under 25 years of age accounted for about a third of the total number of long-term unemployed in both July 2010 and July 2011; people aged 40 or above accounted for about half of the total number of long-term unemployed at these points in time.

The number of people aged under 25 in long-term unemployment increased by 50 during the twelve months to July 2011; the number of people aged 40 or above in long-term unemployment increased by 60 during the same period.

Occupation and Industry

Individuals working in some occupations and industries of the economy, notably in the Finance sector, often seek employment through private agencies instead of registering with the Social Security Department. Such occupations and industries will, therefore, be under-represented in the ASW numbers. Nevertheless, the change over time for all recorded occupations and industries will be informative.

The last industry of employment was recorded for almost nine out of ten people registered as ASW in July 2011:

- a sixth (17%) of those registered were previously employed in 'Retail and Wholesale, Motor repairs and sales';
- a fifth (20%) were employed in 'Miscellaneous professional and domestic services'.

From an occupation⁵ perspective:

- almost a third (30%) of individuals registered as ASW on 31 July 2011 had previously worked in 'Elementary Occupations';
- more than a sixth (18%) had worked in 'Sales and Customer Service Occupations'.

⁵ Standard Occupational Classification SOC2000; see Note 2.

Notes

- 1.** The Advance to Work scheme provides 16 to 19 year olds who have left school or college with a relevant work placement and training. Advance Plus provides over 19 year olds with a relevant work placement and training.

Workwise comprises of a team of advisors in the Social Security Department who help people with special employment needs, or having particular employment barriers, to prepare for and seek suitable work. Since October 2010, a system enabling more complete counting of individuals on Workwise placements has been implemented.

2. Standard Occupational Classification (SOC 2000):

Example occupations within each category:

Managers and Senior Officials

managers and senior offices in public and private sectors.

Professional

science professionals, civil engineers, pharmacists, veterinarians, teachers, lawyers, judges, chartered accountants, architects, social workers, librarians, clergy.

Associate Professional and Technical

science technicians, engineering technicians, nurses, dental technicians, physiotherapists, youth workers, police officers (sergeant and below), artists, actors, graphic designers, journalists, sport coaches, air traffic controllers.

Administrative and Secretarial

office clerks, secretaries, personal assistants, receptionists, book-keepers, telephonists.

Skilled Trades

farmers, gardeners, fishermen, mechanics, electricians, telecommunication engineer, computer engineer, bricklayers, plumbers, carpenters, plasterers, tailors, printers, butchers, bakers, chefs.

Personal Service

nursing auxiliaries and assistants, care assistants, home carers, animal care, leisure and travel assistants, travel agents, hairdressers, nursery nurses, childminders, education assistants, housekeepers.

Sales and Customer Service

sales assistants, retail cashiers, call centre agents, check out operators, customer care occupations, telephone sales person.

Process, Plant and Machine Operatives

plant and machine operatives, fork-lift truck drivers, taxi cab drivers, chauffeurs, bus drivers, van drivers, construction operatives.

Elementary Occupations

farm workers, labourer, packers, postal workers, messengers, couriers, hotel porters, kitchen and catering assistants, waiters, bar staff, domestic cleaners, security guards.

Appendix

Table A1: Number of individuals registered as ASW, Jan 2009 – Jul 2011⁶

		Male	Female	Total	Seasonally adjusted total
2009	Jan	570	270	840	790
	Feb	700	320	1,020	890
	Mar	720	330	1,050	1,000
	Apr	620	300	920	960
	May	560	300	870	970
	Jun	630	330	960	950
	Jul	620	320	940	940
	Aug	580	320	910	930
	Sep	580	330	910	960
	Oct	650	350	1,000	1,020
	Nov	700	390	1,090	1,090
	Dec	700	420	1,120	1,130
2010	Jan	770	440	1,200	1,150
	Feb	810	510	1,320	1,180
	Mar	720	450	1,170	1,130
	Apr	710	430	1,140	1,180
	May	670	390	1,060	1,150
	Jun	690	420	1,110	1,130
	Jul	760	490	1,240	1,250
	Aug	810	490	1,290	1,300
	Sep	770	460	1,230	1,280
	Oct	840	450	1,290	1,300
	Nov	870	440	1,310	1,290
	Dec	800	410	1,210	1,250
2011	Jan	910	480	1,390	1,330
	Feb	960	510	1,470	1,320
	Mar	850	460	1,310	1,290
	Apr	870	490	1,350	1,390
	May	820	520	1,340	1,430
	Jun	780	500	1,280	1,340
	Jul	800	550	1,350	1,360

Statistics Unit
25 August 2011

⁶ Numbers are rounded independently to the nearest 10; hence components may not sum to totals.